

MEKA MANU

Kererū

(New Zealand pigeon)

Hemiphaga novaeseelandiae



Sparklers

MEKA MANU

Characteristics

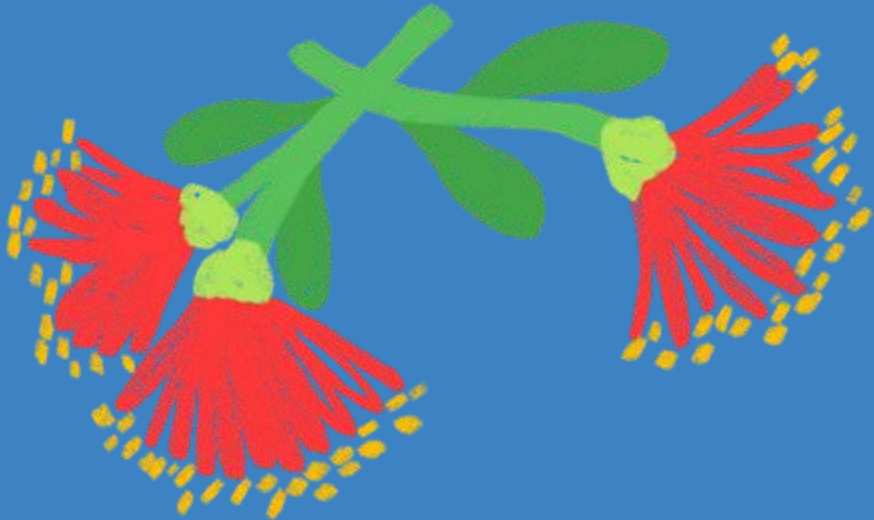
Kererū are very quiet vocally however their wings make a big beating noise.

Kererū know how to get attention. When mating, they fly high up in the air, stop, and drop like a rock in a swooping pattern.

When they need a friend, they draw attention to themselves by hanging from powerlines and tree tops.



Fun fact!



Kererū are one of the few native birds with a beak big enough to feed on big berries. They are also key in the survival of native forests. Since they travel long distances to get the right fruit, they'll disperse seeds across long distances.

MEKA MANU

Are you sometimes quiet?

Do you do funny things that make others smile?

Do you look for fun ways to make friends?

**You might be like
a kererū!**

MEKA MANU

**What can we learn
from kererū?**

**How might we apply
this in our classroom?**

