

MEKA RĀKAU

Tōtara

Podocarpus totara



Sparklers

Characteristics

Tōtara is a tall tree, sometimes growing as high as 40 metres. They can grow in almost any soil and can survive in both wet and dry conditions.

Tōtara wood was the primary wood for building waka. One tree could build a waka for 100 people!

Tōtara have a flaky bark that was helpful for roofing, torches, and containers among other things!

MEKA RĀKAU

Tōtara are one of Aotearoa's biggest and strongest trees.

They are wise beings that can live for more than 1000 years!

Do you stand tall and hearty like a tōtara?

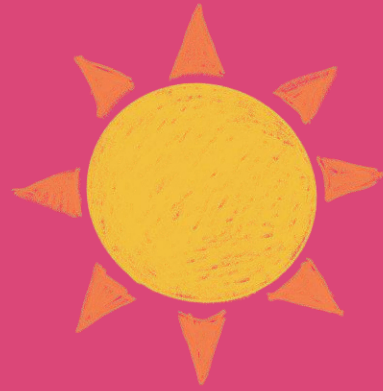


MEKA RĀKAU

Fun fact!

Tōtara are not fussy trees!

Though they are mainly found in the North Island of New Zealand, tōtara will grow in almost any soil and can survive in both wet and dry conditions.



MEKA RĀKAU

**What can we learn from
tōtara?**

**How might we apply
this in our classroom?**

